

4 MOOR END FARM MEWS  
HAREWOOD AVENUE  
HAREWOOD, LS17 9FF



## 4 MOOR END FARM MEWS | HAREWOOD AVENUE | HAREWOOD | LS17 9FF

A beautifully appointed, newly built four-bedroom home set within an exclusive countryside development, offering contemporary living in a truly picturesque setting. Situated within the highly desirable Moor End Farm Mews, this exceptional four-bedroom property combines modern design with a charming rural finish. Finished to an outstanding specification throughout, the home provides spacious and versatile accommodation.

---

Living/Dining Kitchen | Snug | Utility Room | Cloakroom/wc | Control Room

---

Four Bedrooms | Two En-suite Bathrooms | En-Suite Dressing Room | House Bathroom

---

Garden | Patio | Parking

---

Available Now | Returnable Bond £6,923.08

---

Unfurnished | Energy Rating: A | Council Tax: TBC

# £5,000 PCM





The well-designed ground floor's main feature is a spacious open-plan living, dining and kitchen area. Filled with natural light from windows on two sides and French doors leading to the garden, this space connects indoor and outdoor living. The bespoke kitchen includes high-quality units, integrated appliances, and a central island, ideal for everyday use and entertaining.

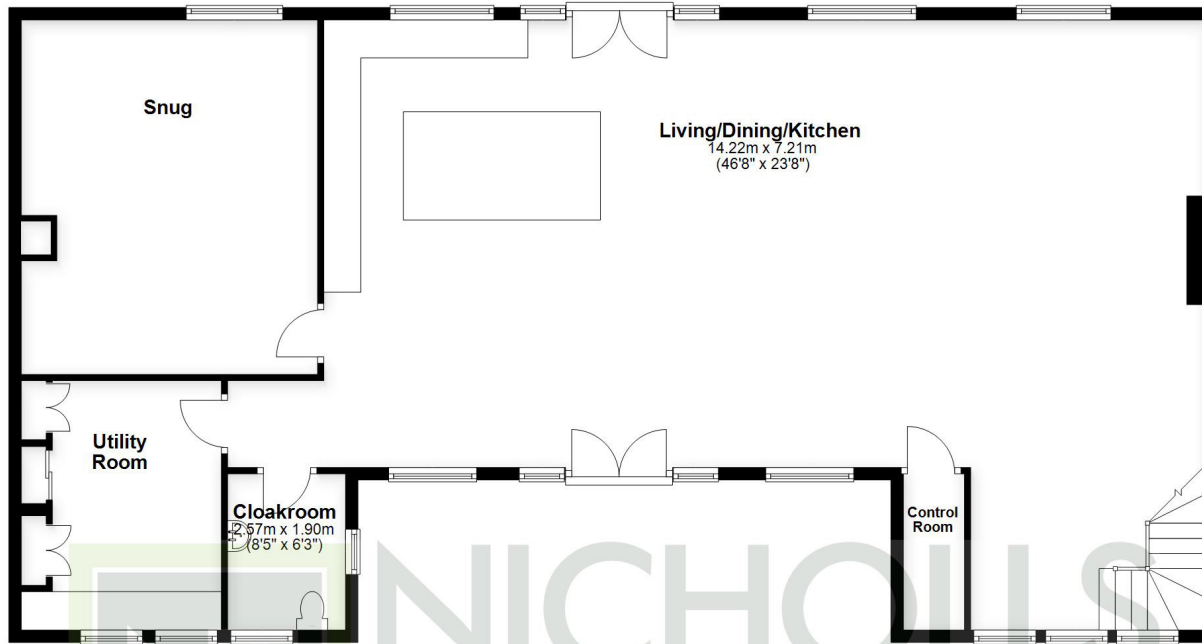
In addition to the main living area, there is a separate snug, along with a useful utility room, cloakroom/wc and extra storage.

On the first floor, there are four well-sized bedrooms. The main bedroom is especially impressive, with a dressing room and a modern en-suite bathroom. A second bedroom also has its own en-suite, while the remaining bedrooms share a stylish family bathroom, all finished to a high standard.

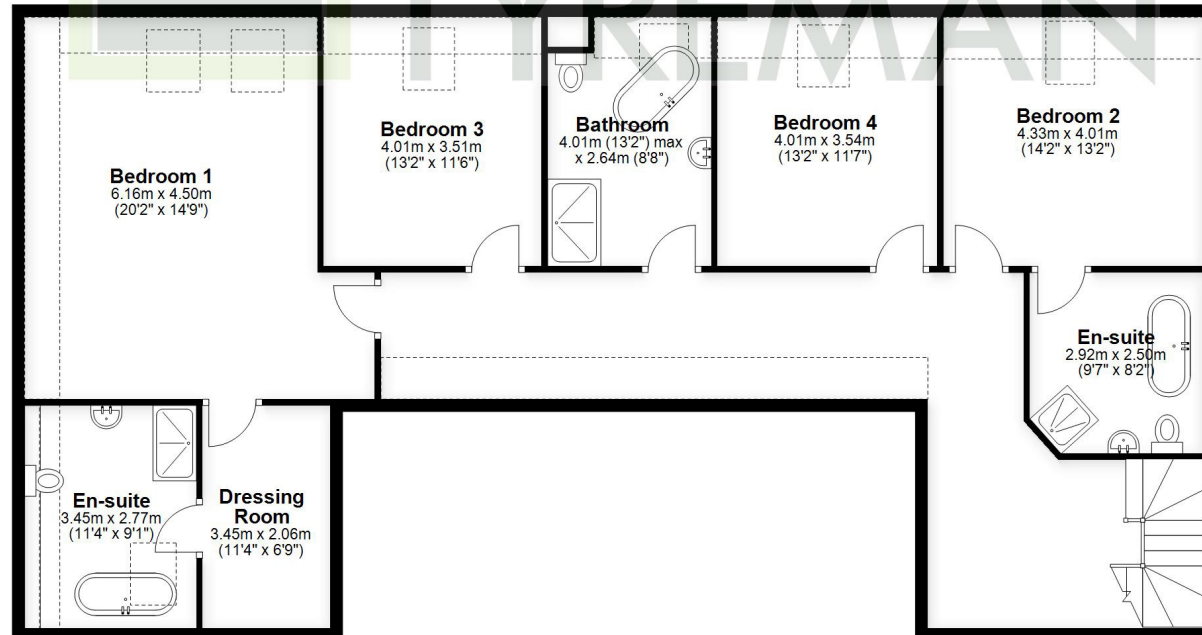
Outside, the property features a well-kept private garden with a patio area, perfect for outdoor dining and parking for multiple vehicles. The attractive stone exterior and landscaped surroundings complement the development's rural setting.



Ground Floor



First Floor



Total area: approx. 315.6 sq. metres (3396.9 sq. feet)

This plan is for illustrative purposes only and is not to scale.  
All measurements are approximate.  
Plan produced using PlanUp.



9 Albert Street, Harrogate  
North Yorkshire HG1 1JX  
Sales: 01423 503076 Lettings: 01423 530744

[WWW.NICHOLLSTYREMAN.COM](http://WWW.NICHOLLSTYREMAN.COM)

These particulars are given as guidance only and are expressly excluded from any contract. They give no warranty as to the condition or description and any recipient must satisfy himself on all matters stated herein. The property is offered subject to contract and to its being unsold and unlet. Appointments for viewing and contract of all negotiations shall be through Nicholls Tyreman Estate Agent.